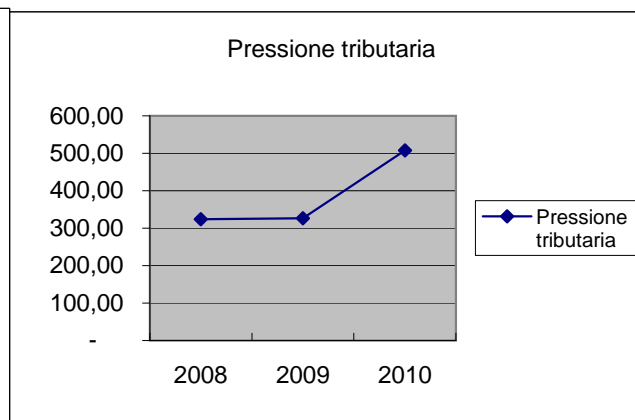
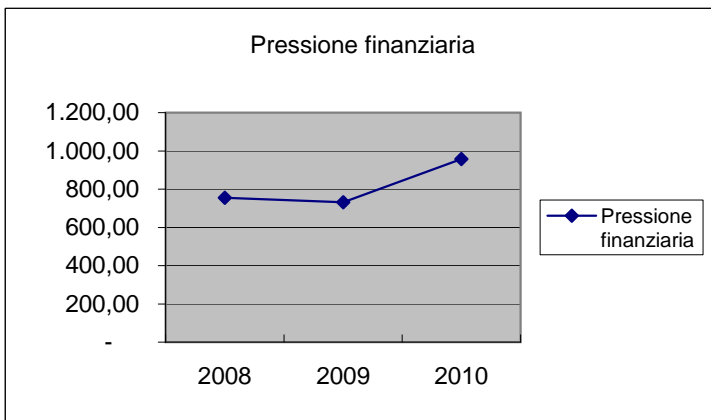
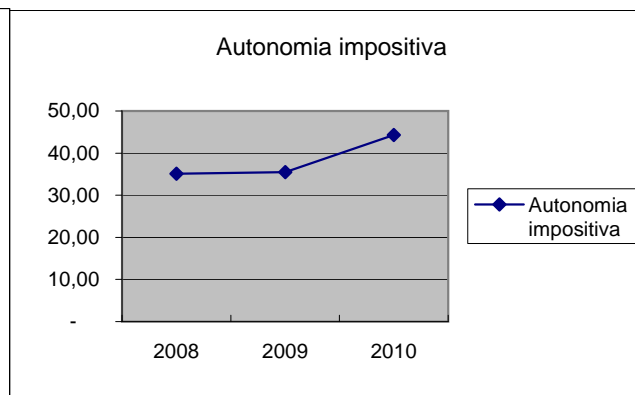
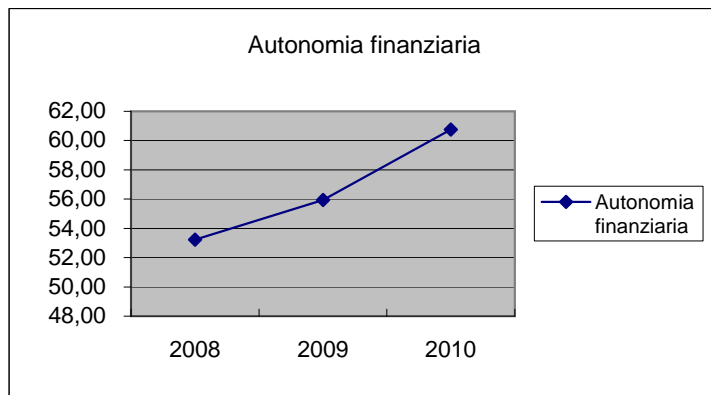


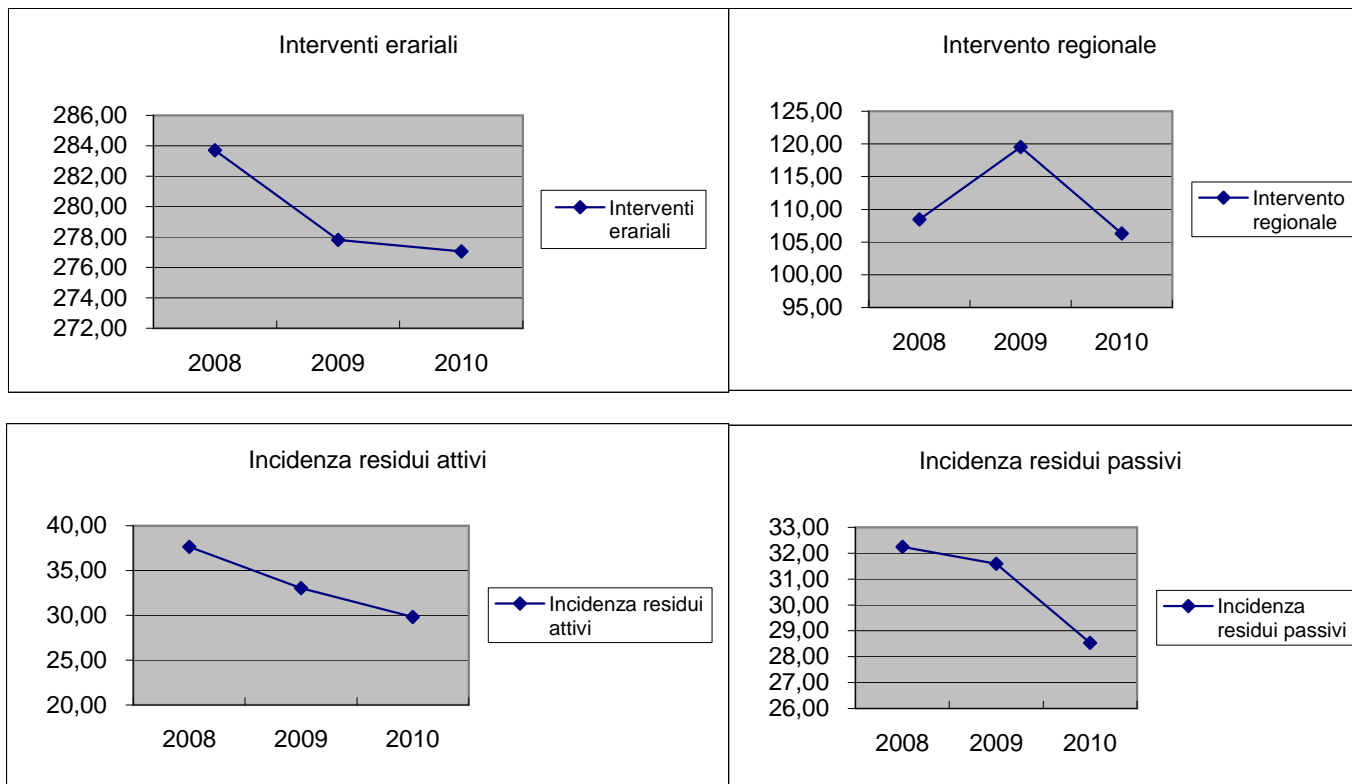
INDICATORI FINANZIARI ED ECONOMICI GENERALI

		2008		2009		2010				
<u>Rigidità spesa corrente</u>	<u>Spese personale + Quote ammor. nto mutui x 100</u> Totale entrate Tit. I + II + III	<u>72.564.539,12</u> 152.438.462,00	=	47,60	<u>70.050.643,89</u> 153.405.918,99	=	45,66	<u>67.845.683,88</u> 192.783.793,76	=	35,19
<u>Velocità gestione spese correnti</u>	<u>Pagamenti Tit. I competenza</u> <u>Impegni Tit. I competenza</u>	<u>106.522.567,92</u> 148.050.882,50	=	0,72	<u>101.543.597,31</u> 144.321.411,87	=	0,70	<u>106.440.221,64</u> 183.896.469,03	=	0,58
<u>Redditività del patrimonio</u>	<u>Entrate patrimoniali x 100</u> Valore patrimoniale disponibile	<u>3.706.900,63</u> 140.608.251,17	=	2,64	<u>2.501.868,70</u> 140.619.114,13	=	1,78	<u>7.062.040,01</u> 146.928.381,23	=	4,81
<u>Patrimonio pro capite (1)</u>	<u>Valori beni patrimoniali indisponibili</u> Popolazione	<u>156.439.483,87</u> 165.313	=	946,32	<u>154.825.670,94</u> 166.838	=	928,00	<u>153.789.652,01</u> 168.169	=	914,49
<u>Patrimonio pro capite (2)</u>	<u>Valori beni patrimoniali disponibili</u> Popolazione	<u>140.608.251,17</u> 165.313	=	850,56	<u>140.619.114,13</u> 166.838	=	842,85	<u>146.928.381,23</u> 168.169	=	873,69
<u>Patrimonio pro capite (3)</u>	<u>Valori beni demaniali</u> Popolazione	<u>46.792.162,83</u> 165.313	=	283,05	<u>51.187.947,01</u> 166.838	=	306,81	<u>50.758.503,73</u> 168.169	=	301,83
<u>Rapporto dipendenti/popolazione</u>	<u>Dipendenti</u> Popolazione	<u>1.324</u> 165.313	=	0,0080	<u>1307</u> 166.838	=	0,0078	<u>1278</u> 168.169	=	0,0076

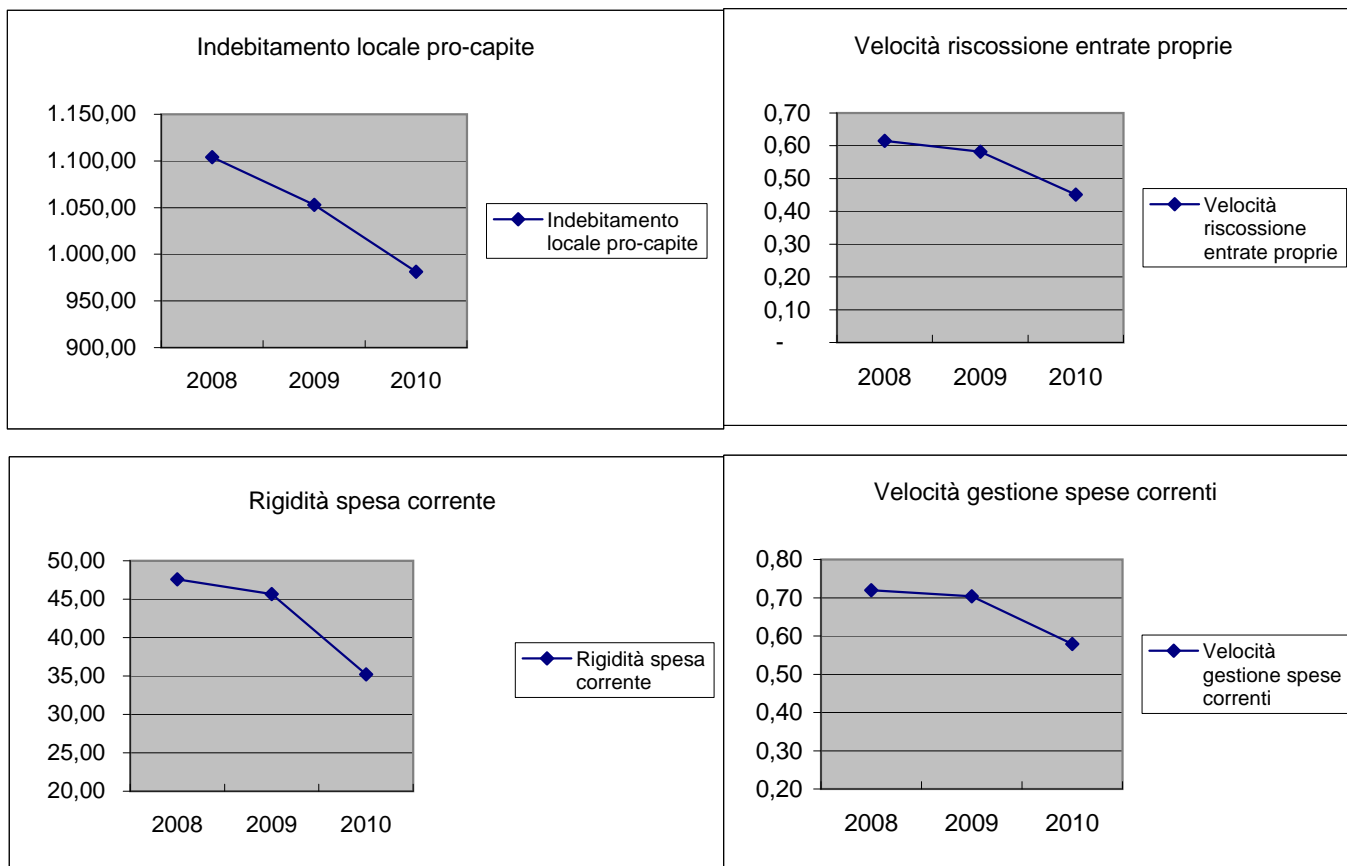
GRAFICI RELATIVI AGLI INDICATORI FINANZIARI ED ECONOMICI GENERALI



GRAFICI RELATIVI AGLI INDICATORI FINANZIARI ED ECONOMICI GENERALI



GRAFICI RELATIVI AGLI INDICATORI FINANZIARI ED ECONOMICI GENERALI



GRAFICI RELATIVI AGLI INDICATORI FINANZIARI ED ECONOMICI GENERALI

